



**FRIENDS OF TUALATIN RIVER  
NATIONAL WILDLIFE REFUGE  
ANNUAL REPORT  
2019**

## A Special Donor Thank You from FOR

As a 501(c)(3) Not-for-Profit Organization we could not accomplish the things that you will read about in this report without the continued generous support of our Friends members, Volunteers, Community partners, Foundations, Donors and US Fish and Wildlife Service. We deeply appreciate the support we receive. Your support directly allows us to achieve our Mission of supporting the Tualatin River National Wildlife Refuge. This past year, the Friends have supported the Refuge in a variety of ways. This includes helping with the Refuge's Volunteer Appreciations, Staff Development and providing outreach opportunities in and for the community. As the new year approaches, the Refuge is ready to execute the restoration of the two permanent wetland in front of the Visitors Center and the Friends will be providing the funding for the planting material, plan development and contract work. These funds were earmarked in this year's fiscal budget for a contribution that is now in excess of \$30,000. Watch from the Visitors Center as the dramatic transition takes place, and know that your membership and donations have made this restoration work possible.

Your financial support of the Friends allows us to do what we do best-Joyfully Connecting Our Community with the Wonder of the Refuge. Thank you!

### Friends' General Refuge Support

Friends of the Refuge Board of Directors

Friends of the Refuge Members

Anonymous

Amazon Smile

Greg & Margie Abbott

Lisa Brenner & Tom Stibolt

Patsy Bruggele

Sharon Birrel

Stan & Dawn Carovano

Digimarc Corp

Fred Meyer Rewards

Bjorn Fredrickson

Jonah Greenberg

Randee Giannini

Nicole Hendrix

Tim & Carol Henry

Intel Volunteer Hours Grant Program

Intel Employee - Community Giving Campaign Match Funds

Kaiser Foundation- Community Giving Campaign Match Funds

Austin Kane

Lisa Knudsen

Gaspard Le Dem

Jill Leigh

Shirley McClung

Sharon Miller

Mueller-Crispin Cultural and Environmental Fund

Nancy Denton Murray Revocable Trust

Oregon Beverage Recycling Bottle Drop

Claire Oslund

PGE- Employee Giving Campaign

Barry and Sue Post

Beth Purta

The Reed Family Fund

Eileen Roche

Mary Silvalienau

Ian Thompson

Betsy Towle

Washington County Strategic Investment Program

Betty H. Young

### Donations in Honor or Memory

*In Memory of Friends' Board Member and EE Committee Chair Berk Moss*

Pat & Bobbie Allaire, Judith Doyle

*In Honor of Bob Swanson's 80th Birthday*

Patrick & Rita Kelly, N. Jensen

### Environmental Education Programs

U.S. Fish and Wildlife Service

### Refuge Restoration Programs

U.S. Fish and Wildlife Service

### Special Events

U.S. Fish and Wildlife Service

City of Sherwood

Electronic Wood Systems North America/ Keith Mays

Bosky Dell Natives

Clean Water Services

Pride Disposal Co.

Kohl's

Koi Fusion

Kuni BMW

Dental Care of Sherwood

Home Depot- Sherwood

Les Schwab- Sherwood

### Emerald Patron Festival Sponsors

Anonymous (2)

Bonnie & Marty Anderson

Dawn & Stan Carovano

Tom Hartz

Irene Vlach

Scott Owen

Sharon Miller

Edwin Squiers

Michelle Miller

Alan Christensen

Willem Stoeller & Cathy Shikatani

# 2019 Annual Report

## Friends of Tualatin River National Wildlife Refuge

### President's Message - Mark Newell



What has the Friends Group been up to this year? We received a grant for \$440,000.00 to help with the restoration projects on the Refuge, another \$100,000.00 to build a bridge over the new Chicken Creek crossing, and we donated \$25,000.00 to restore ponds 1P and 2P right behind the Visitors Center. That's over a half million dollars raised or donated to the Refuge by the Friends, we can be proud of that. Restoration projects don't happen overnight but you'll see the difference we made in the near future.

In addition, the Refuge has one of the highest numbers of volunteer hours in the Region (thank you Volunteers), one of the most active Visitor Service Programs in the Region (our Region has 67 Refuges in it; thank you Bonnie, Todd, Andrew, Tiffany, Carly, Catherine, and Nathan, our six outstanding employees), and the Friends Group manages and runs the Nature's Overlook Store where all the proceeds go right back into the Refuge (thank you store Volunteers).

Bonnie is our Administrator. She's been instrumental in acquiring those big grants and administering them. She's also hugely responsible for the Annual Bird Festival that brings in over 900 visitors to the Refuge and the Native Plant sale which contributes money to keep the Bird Festival free.

Tiffany our Environmental Education Specialist and Andrew our Interpretive Program Coordinator have been doing a lot of great work with the field trips, Puddle Stomper program, naturalist program, wildlife walks, trailhead nature tables, drop-in exploration days, volunteer

training, and special programs like the Creatures of the Night. They work with senior centers, churches, schools, families, the Oregon Zoo, and clubs like the Kiwanis. Carly and Catherine have been helping them accomplish all this during their time as seasonal employees.

Nathan is our Invasive Species Technician. His job is to slow or eradicate the invasive species on the Refuge. We are grateful for his talents.

We also have an amazing working relationship with the Refuge staff. From the Biologists, Visitor Service staff, the Urban Program, to the Project Leaders, these USFWS employees are an amazing group of individuals with many talents the Refuge can be proud of.

The year in review? I'd say we have reason to celebrate and a great deal to be thankful for. Our Friends organization is strong. We have a dedicated staff and Board with diverse talents and an incredible group of volunteers with a degree of dedication not seen elsewhere. We have a beautiful place, in the heart of a great city, where you can see a coyote walk across the marsh, black tail deer saunter along the trails, and where we can teach our children about nature, quiet places, and the value of an open natural space. We're extremely proud of the work our volunteers do, of our dedicated employees, and our relationship with and ability to help the Refuge. We would love to have you as part of our team. Go to: <https://fotr.wildapricot.org/Join/>

Want a bigger role? Talk to us about becoming a Board member! We are currently looking for a treasurer. Some accounting experience would be beneficial.



# FINANCIAL REPORT

Submitted by Willem Stoeller, FOR Board Treasurer  
as of August 31, 2019

With one month remaining in the current fiscal year, the financial condition of the Friends organization is better than forecasted in the FY2018-2019 budget. Total cash balances as of August 31 are \$129,317 unrestricted and \$34,751 restricted funds. The \$129,317 of unrestricted funds consist of \$66,185 disposable funds, \$37,132 designated funds and \$26,000 operational and cash flow reserves.

The Accounts Receivable for Restricted Grants is \$120,000, and the Accounts Receivable for unrestricted Grants is \$20,000.

The Nature's Overlook Store operation generated 105% of the planned budget and has contributed \$14,054 to the Friends organization.

This fiscal year the Friends contributed \$2,238 in direct assistance to the refuge. The approved budget for next

fiscal year (FY2019-2020) includes \$30,500 in direct assistance to the refuge. This includes \$25,000 for restoration of sectors 1P and 2P.

The Friends assisted the TRNWR by obtained a total of \$540,000 in grants for the Chicken Creek restoration project. Since these are cost-reimbursable grants, most of it is not shown in the included financial reports.

As was the case last year, however, there will be a continuing need to identify new funding resources to sustain the growth of our programs.

My thanks go out again to Dawn Carovano and Bonnie Anderson. I would not have been able to fulfill my role as treasurer during the last five years without their much appreciated help.

## Friends of TRNWR Budget vs. Actuals: Budget 17/18 - FY18 P&L Classes October 2017 - August 2018

	Total	
	Actual	Budget
<b>Fundraising</b>	(3,370.00)	(5,232.00)
<b>Genl &amp; Admin Cost</b>	35,558.01	6,369.00
<b>Membership Development</b>	(6,183.70)	(8,700.00)
<b>Programs</b>		
<b>Advocacy</b>	(500.00)	(4,780.00)
<b>Bird Festival</b>	12,985.04	11,209.59
<b>Environmental Education</b>	55,411.75	4,430.63
<b>Interpretive Program</b>	61,996.96	18,796.40
<b>Photo Society</b>	3,385.39	6,085.39
<b>Refuge Assist</b>	(2,237.78)	(20,500.00)
<b>Restoration</b>	27,626.43	920.02
<b>Total Programs</b>	<b>158,667.79</b>	<b>16,162.03</b>
<b>Store Operations</b>	14,053.58	13,462.00
<b>TOTAL</b>	<b>198,732.35</b>	<b>22,061.03</b>

Tuesday, Sep 10, 2019 01:28:39 PM GMT-7 - Accrual Basis

**Friends of TRNWR**  
**Statement of Financial Position**  
As of August 31, 2019

	Total	
	As of Aug 31, 2019	As of Sep 30, 2018 (PP)
<b>ASSETS</b>		
<b>Current Assets</b>		
<b>Bank Accounts</b>		
10000 FOR Checking Homestreet Acct	0.00	503.00
10000.1 FOR Checking -Without donor restrictions	32,909.71	18,115.66
10000.2 FOR Checking-With donor restrictions	5,643.74	3,185.43
10000.3 FOR Ck Cashflow Reserves - Without donor restrictions	10,000.00	10,000.00
10000.4 FOR Ck -Festival Designated	12,132.44	17,569.33
10000.5 FOR Ck-Board Designated	0.00	3,000.00
Total 10000 FOR Checking Homestreet Acct	\$ 60,685.89	\$ 52,373.42
<b>10100 FOR MoneyMkt Bus. Partnership</b>		
10100.1 FOR MoneyMkt-Without donor restrictions	18,138.12	32,775.28
10100.2 FOR MoneyMkt-With donor restrictions	29,107.13	39,107.13
10100.3 FOR MnyMkt Ops Reserve - Without donor restrictions	16,000.00	16,000.00
10100.5 FOR MoneyMkt-Board Designated	25,000.00	
Total 10100 FOR MoneyMkt Bus. Partnership	\$ 88,245.25	\$ 87,882.41
10200 Store Nature's Overlook Account	13,244.33	25,003.70
Total 10400 Digital Funds Transfer	\$ 1,664.67	\$ 3,107.32
10600 Paypal Processing	228.03	165.36
Total Bank Accounts	\$ 164,068.17	\$ 168,532.21
<b>Accounts Receivable</b>		
11200 Grants Receivable Without donor restrictions	20,000.00	0.00
11400 Grants Receivable With donor restrictions	124,000.00	110,169.00
Total Accounts Receivable	\$ 144,000.00	\$ 110,169.00
<b>Other Current Assets</b>		
13500 Supplies Inventory	85.21	85.21
14000 Store Inventory	31,658.92	30,523.86
Total Other Current Assets	\$ 31,744.13	\$ 30,594.07
Total Current Assets	\$ 339,812.30	\$ 309,295.28
Total Fixed Assets	\$ 1,096.28	\$ 1,096.28
<b>TOTAL ASSETS</b>	\$ 340,908.58	\$ 310,391.56
<b>LIABILITIES AND EQUITY</b>		
<b>Liabilities</b>		
<b>Current Liabilities</b>		
20400 Festival Payables	781.91	156.91
Total Accounts Payable	\$ 781.91	\$ 156.91
Total Current Liabilities	\$ 781.91	\$ 156.91
Total Liabilities	\$ 781.91	\$ 156.91
Total Equity	\$ 340,126.67	\$ 310,234.65
<b>TOTAL LIABILITIES AND EQUITY</b>	\$ 340,908.58	\$ 310,391.56

Tuesday, Sep 10, 2019 12:52:06 PM GMT-7 - Accrual Basis

## FOR Budget Summary FY 19-20

Program	Gross Income	Expenditures	Restricted/Designated Rollover	Net Revenue including Rollover
Fund Raising	0.00	7,538.00		(7,538.00)
General & Admin	34,400.00	26,265.00	1,000.00	9,135.00
Membership	0.00	8,910.00		(8,910.00)
Advocacy	0.00	5,150.00		(5,150.00)
Bird Festival	8,700.00	12,600.00	11,600.00	7,700.00
Photo society	0.00	1,300.00	3,385.39	2,085.39
Refuge Assist	0.00	30,500.00	25,000.00	(5,500.00)
Store	20,330.00	6,818.00		13,512.00
<b>TOTAL</b>	<b>63,430.00</b>	<b>99,081.00</b>	<b>40,985.39</b>	<b>5,334.39</b>
EE	49,500.00	54,500.00	5,000.00	0.00
Interpretation	49,500.00	54,500.00	5,000.00	0.00
Restoration	36,100.00	36,100.00	0.00	0.00

Designated  
Restricted

Net Revenue non-restricted and non-designated For the FY 19-20  
Restoration staff funded only through April 2020

(4,451.00)



## RESTORATION COMMITTEE

Submitted by the Committee



*Southridge High School Thespian Troupe Work Party*

This has been a monumental year for restoration at Tualatin River National Wildlife Refuge Complex! Chicken Creek construction broke ground in August and is successfully underway. Through the Habitat Restoration Specialist, Nathan Kossnar, the Friends were heavily involved in site prep in the construction area and areas designated for plantings this upcoming autumn, eradicating invasive species on over 100 acres of the newly constructed Chicken Creek floodplain. Additionally, the wetland cells closest to the Visitor Center have been emptied to prepare for revegetation efforts spearheaded by the Friends.

This year's Second Saturday Work Parties knocked back 25+ acres of blackberry and clematis, cut and planted over 100 willow stakes, and removed thousands of old tree tubes littering the refuge from previous restoration plantings. We are always happy to accommodate organizations, groups and students who would like to come out and get their hands dirty with restoration work! This past year has revolved around the planning phase of the major projects surrounding Chicken Creek and Wapato Lake. The season of planting events is quickly approaching. Stay tuned during FY2020 for planting events for Chicken Creek, Wapato Lake and the permanent wetland cells closest to the Visitor Center!

In 2019, the Friends played an important role in helping expand Metro's amphibian egg mass survey program here at Tualatin River. In total, our volunteers logged over 100 hours of dedicated survey time; an increase from the previous year. We are happy to announce that all four target species reside on refuge property;

Northern red legged frog, Western chorus frog, Long toed salamander, and Northwestern salamander all call Tualatin River NWRC home. As part of this year's survey, the pre-restoration channel of Chicken Creek was surveyed to provide a sense of conditions of the area before construction. We are eager to hop into the newly aligned creek channel and see how the landscape is beginning to transform. We are thrilled to team up with fantastic partners to help advance citizen science opportunities in the Portland metro area.

The Friends of the Refuge are also responsible for several notable funding contributions to advance restoration efforts at Tualatin River. The Friends are administering an agreement of \$440,000 from Willamette Water Supply, covering phase 1 costs of Chicken Creek restoration (channel construction and woody debris placement) as well as funding for the Habitat Restoration Specialist position. The Friends are also the fiscal agent for a Tualatin Soil and Water Conservation District grant of \$100,000, covering the cost of a new bridge across the reconnected Chicken Creek channel.

Nathan headed to the U.S. Fish and Wildlife Service's National Conservation Training Center in early September to attend a forestry course. This was his first time attending an NCTC course, where he picked up the skills and knowledge to identify potential points of collaboration with neighboring land managers and foresters where conservation and resource management goals align. Following Nathan's return to the refuge, the trail cameras have been redeployed and more wildlife pictures are to be expected in the upcoming weeks and months.

Partners this year included: U.S. Fish and Wildlife Service, Metro, Clean Water Services, THPRD, Wetlands Conservancy, Ash Creek, TSWCD, Willamette Water Supply



*Red-Legged Frog Egg Mass*



*Amphibian Egg Mass Survey*



# VISITOR CENTER & NATURE'S OVERLOOK SALES OUTLET

Submitted by Sharon Miller, FOR Board Member

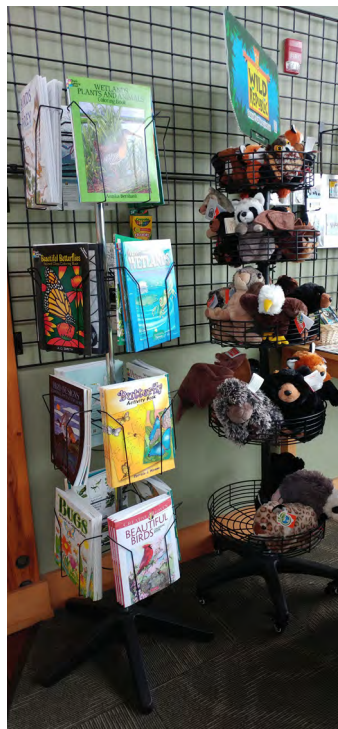
It has been a busy year in the Visitor Center and the Nature's Overlook retail store. Over 26,000 visitors have come into the building to see the exhibits, attend classes or presentations, enjoy the view, or shop in the store. Many are from the surrounding communities, but this year folks from 35 states and 11 countries have signed the guest book. Others have chosen to be anonymous and not sign the book, and that's just fine. We're happy that they found us and had a great experience on the Refuge.

Visitors came from as far away as Australia, New Zealand, India and Singapore, as well as several European countries. Comments in the guest book are always positive; people are happy to be here!

The Nature's Overlook store is operated by the Friends of the Refuge, with a core group of dedicated volunteers who act as ambassadors for the Refuge. They work in the

store, but they also answer many questions, help identify the birds and other animals that visitors photograph, loan out binoculars and Discovery Packs, and explain all of the activities and projects happening on the Refuge. We are always looking for more volunteers, so if you enjoy sharing your love of the Refuge with others, being a Visitor Center volunteer may be a perfect fit.

The Store had gross sales of over \$50,000 this year, due to the great merchandise selected by our volunteer buyers. All profits from the store go toward projects on the Refuge. Shopping at the store is a perfect way to donate to the Refuge, and it's especially a great place to shop for logo wear to "brag" about the Refuge and the Friends! And, don't forget, Friends members always receive a 10% discount on all purchases.





# INTERPRETATION & ENVIRONMENTAL EDUCATION PROGRAM

Submitted by **Andrew DelGreco, Interpretive Program Coordinator**  
and **Tiffany Mancillas, Environmental Education Specialist**

## Interpretive Program

The Interpretive Program is a key component to promoting environmental conservation at the refuge. The goals of the program include welcoming or orienting people to the refuge, sharing the importance of native wildlife and their habitats, encouraging nature exploration and appreciation, and sharing ways people can help their local environment. The interpretive program works to accomplish these goals through a mix of formal and informal interpretive programming. This year programs offered to the public included Nature Ambassador programs, Waterfowl Watch, Bats of the Night, Wildlife Walks, Trailhead Tables, adult and senior group visits, and a variety of public presentations. Together, our interpretive programs reached 4,257 people both on and off the refuge, promoting environmental conservation across the region.

### Nature Ambassadors

Nature Ambassadors are the outreach branch of the interpretive program. Refuge volunteers travel to local parks, libraries, and the Oregon Zoo to promote the refuge and provide nature education opportunities to people outside of the refuge. Our partnerships include Sherwood Library, Newberg Library, Tigard-Tualatin School District, the Oregon Zoo, and our new partner this year, Tigard Library. During the school year, Nature Ambassadors connect to people at local libraries, providing themed programs and discussing refuge activities and programs. In the summer season we partner with Tigard-Tualatin School District's summer feeding program and travel to Atfalat'i Park and Tualatin Community Park to provide nature tabling and activities



*Nature ambassadors interact with visitors at the Oregon Zoo.*

to youth and families arriving for a meal. Volunteers participated in Bilingual Story Hour at Stella Olsen Park this summer (hosted by Sherwood Library), and provided nature crafts for diverse families. In addition, Nature Ambassadors partner with the Oregon Zoo and provide tabling opportunities during Zoo Lights, International Beaver Day, and other events throughout the year. Together, the Nature Ambassadors reached 1,471 people with conservation messaging and refuge promotion this year.



*Bald eagle-themed trailhead table on the Refuge.*

### Summer Interpretive Programming

Summer is the height of the interpretive program season, and June kicked off with a new interpretive program schedule. Carly H., our seasonal interpretive staff member, worked to create themed "Trailhead tables" to be used at the trailhead each week, teaching families and visitors about different resources on the refuge. Themed tables included Bald Eagles, Busy Beavers, Birdwatching 101, Birds of Prey, Salmon of the Tualatin Basin, Backyard Birds, Herpetology, Plentiful Plants, Wild Waterfowl, and Creatures of the Dark. Carly also lead five interpretive Wildlife Walks for the public, where visitors walked along the refuge's seasonal trail, learning about refuge habitats and the wildlife that live there. Most visitors on the wildlife walks were new to the refuge. In addition, we offered three Bats of the Night programs, led by our own bat biologist, Eva K., Deputy Refuge Manager. With 10 new interpretive tables, and full wildlife walks each week, the refuge saw a successful season, connecting to 615 visitors through interpretive programming on the refuge.





*Exploring pond life during Drop-In Exploration Day.*

## Environmental Ed Program

The environmental education program shifted from more informal nature walks and mostly pelts and skulls classroom portions to 12 lessons with defined curriculum. Popularity of programs has increased this past year as the Environmental Education team ramped up outreach to local communities and increased partnerships. This season our education team visited local school district Hopkins Elementary to reach over 225 students at the school. The education team brought lessons on adaptation and birds and nests to all of the kindergarten, first, and second grades classes. The second grade classes had a multi-visit lesson plan which included a culminating trip to the Refuge.

Other offsite school visits included Chief Joseph Elementary School and local whole babies preschool. This fiscal year we reached 934 students during offsite programming and 3,200 onsite visits, which is an increase of over 1,000 participants from last year.



*Students visit the Refuge with environmental educator Tiffany.*

As a highlight for the program, this past summer we held our first bilingual Drop-in Exploration Day for Latino Conservation week. In our ongoing effort to welcome all to refuges, it was identified that highlighting this week was of importance to the Refuge. We strive to make this place and the programs we offer as welcoming and inviting to all as we are able. In consideration of the Drop-in Exploration Days, staff believed that engaging with Latino Conservation week was a good parallel to the outreach engagement work for the Bird Festival currently being accomplished collaboratively between the Friends, the Urban Refuge Support Team, and the Refuge.

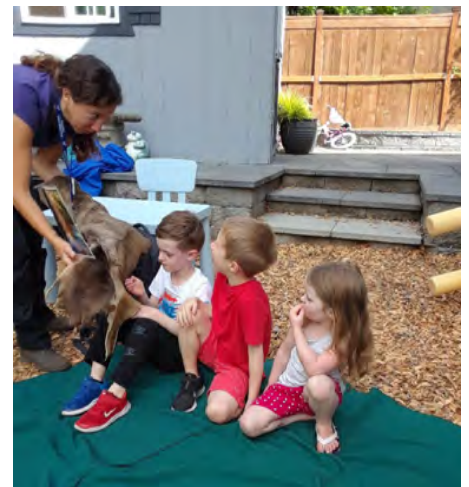
TRNWR partnered with Camp ELSO for the first time this year. Camp ELSO is a camp that takes a multicultural approach to environmental STEM education, supporting future science leaders from underrepresented communities. This partnership has been a process starting in May of this year to support the development and resource access to communities of color.

Tiffany has been working with this group to provide culturally appropriate and relevant material for their visit to the Refuge. Friends of the Refuge provided free cameras for 27 students to use during their photojournalism week. Tiffany and Natalie welcomed the group to the refuge and Tiffany taught a pelts and skulls lesson. The cameras were borrowed from the discontinued Nature camp.

Conversation around future planning has included options to create a packet for self-guided teachers to visit the Refuge in addition to guided staff and naturalist-led visits.



*A Camp ELSO camper tries out a digital camera during a field trip to the Refuge.*



*Children learn about the creatures of the Refuge during an offsite school visit.*



# TUALATIN RIVER BIRD FESTIVAL

Submitted by Scott Owen, Festival Co-Chair



The 23rd Annual TRNWR Bird Festival was held on May 18, 2019. Early morning bird walks began at 5:30 am, led by a dedicated team of three U. S. Fish and Wildlife Biologists. The majority of the activities and events occurred between 10:00 am and 4:00 pm under a beautiful blue sky. Over 900 families and individuals enjoyed this annual free event hosted by the Friends of the Refuge and the USFWS. Our publicity through Univision and Bustos Media helped ensure that we had visitors that represented the entire metropolitan area. We also had bilingual volunteers at the Welcome Table, on the wagon rides, and at several activities throughout the day.

The Festival had over 20 different activities, from wagon rides with the chance to see the area for the upcoming restoration of Chicken Creek, to birdhouse building, arts & crafts, Gytaku, duck decoy painting, hunting dog demonstrations, casting, archery, and live birds from the Audubon Society; truly

something for everyone. Thank you to the 75 volunteers and multiple partners who helped make all the events possible.

We also had 13 exhibitors, including Backyard Birdshops, Clean Water Services, Tualatin Valley Trout Unlimited, Prescott Bluebird Recovery Project, Urban Nature Partners, Xerces Society, PGE, and fellow Refuges in OR and WA; all had interesting information to share with visitors.

We had terrific individual and corporate sponsors who, with money and in-kind donations, help ensure that the event remains free – Clean Water Services, Dental Care of Sherwood, Kohl's, Electronic Wood Systems, Kuni BMW, Pride Disposal, the City of Sherwood, Bosky Dell Native Plants, Home Depot, Starbucks Coffee in Sherwood, Hungry Hero Desserts, Les Schwab Tire Center of Sherwood, Phil's Farm Market, and members of the Friends Board. Thank you!







At the end of the day, the success of the Festival is represented in feedback from visitors as evidenced by comments from the surveys:

*So well organized and so much fun. We were super impressed and had a great time. Thank you!*

*The bus service was amazing, Thank you!*

*I thought it was great! We will come back next year.*

*It was amazing*

*Very well organized, meaningful activities!*

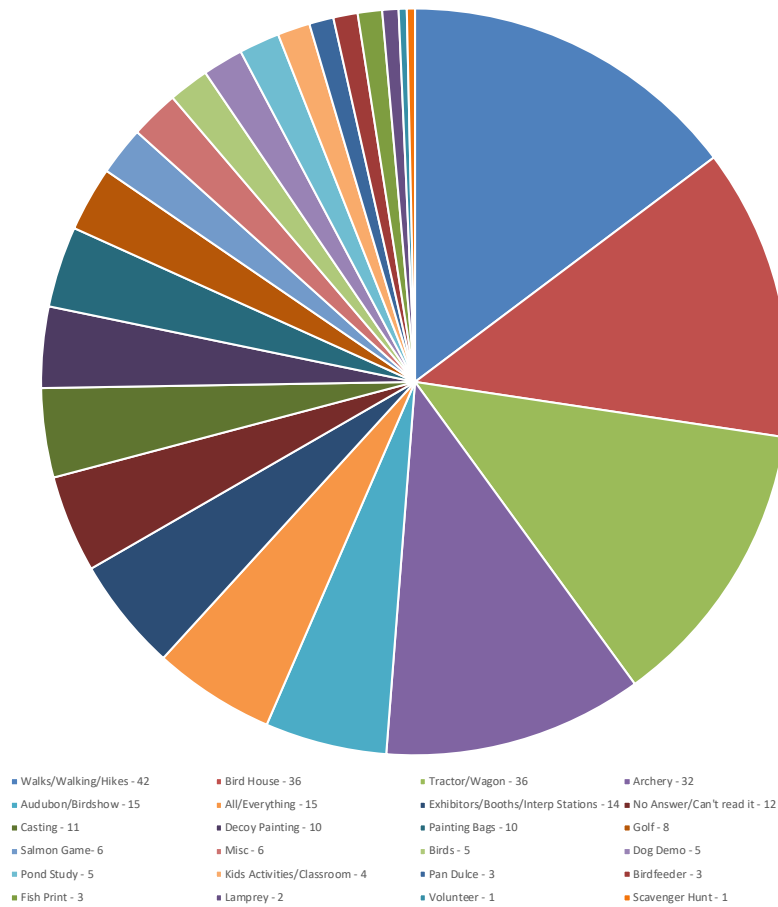
*It was fabulous! Volunteers were wonderful.*

*We love it!*

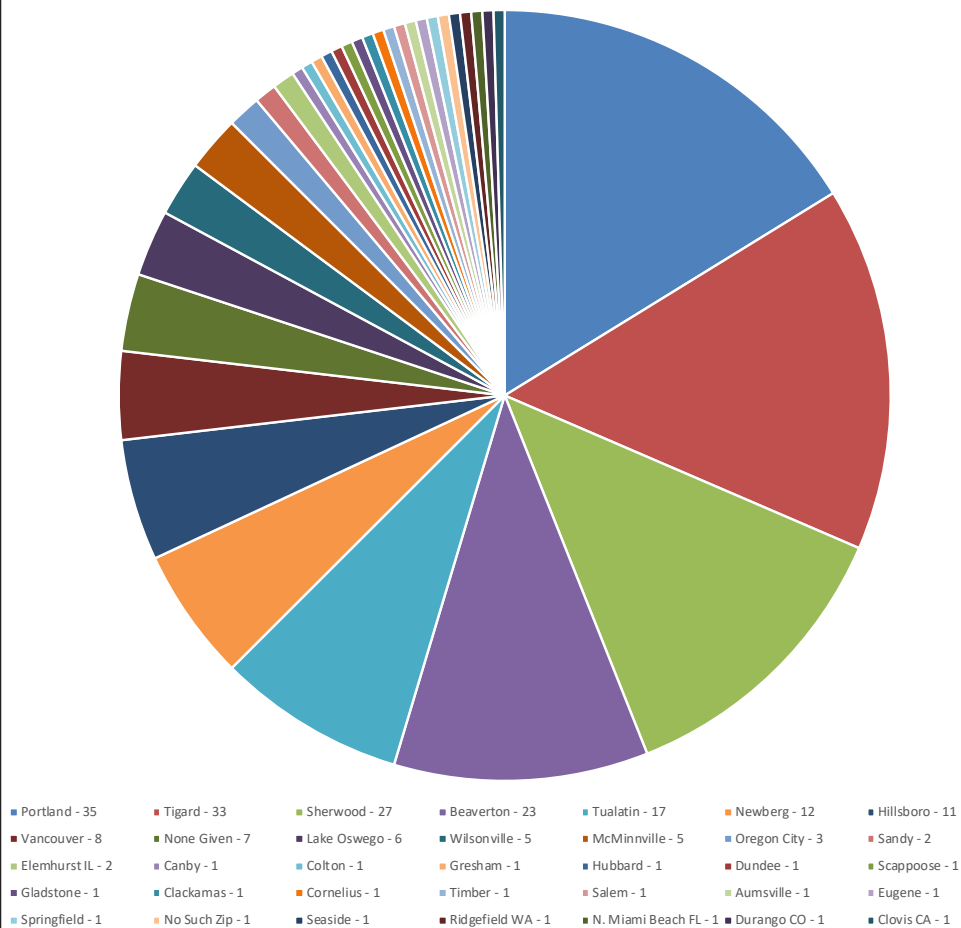


Thank you to everyone who helped make this year's event such a success!

Visitors Favorite Activity

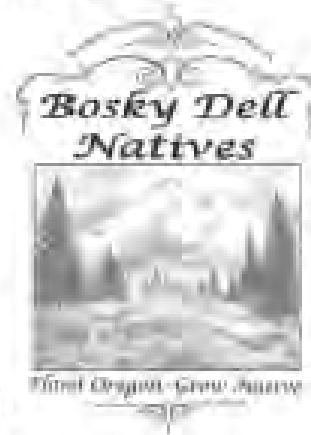


Where the Visitors Came From





**2019 Bird Festival Made Possible By:**



The Home Depot • Starbucks Coffee of Sherwood  
Hungry Hero Dessert Co. • ODFW  
Les Schwab Tire Center of Sherwood

**Emerald Patrons (\$100 donations)**

The Anderson Family  
Stan & Dawn Carovano  
Alan Christensen  
Tom Hartz  
Michelle Miller

Sharon Miller  
Scott Owen  
Willem Stoeller  
Ed Squires  
Irene Vlach

**Festival Sponsorships Matter**

**Help us thank our Festival Sponsors by supporting them!**

## SPECIAL REPORT: A Message from the Refuge Manager

What is a Friend? It can mean a lot of different things to different people. I think a friend is someone you can trust and depend on. Celebrate the good times and pull together through the bad times. A friend is someone who, at the end of the day, puts the needs of others ahead of their own. This is how I would describe the Friends Group here at the Refuge. Thank you for all you do day after day and year after year. It is recognized that a Refuge Manager leaves their mark on a refuge. Friends Groups also leave their mark, and you should be proud of the overwhelmingly positive impact you have had and I know will continue to have on this Refuge.

What are some of those positive marks from this past year? The Refuge won the Washington County Visitor's Association Favorite Attraction Award for 2019, which would not have been possible without all the hard work the Friends put into manning the Visitor Center, leading programs, walking the trails, and in most instances, being the face of the refuge. The Friends stepped up and took on the challenge of the restoration planting around Ponds 1 and 2 at Tualatin River and around the new bridge at Wapato Lake through funding and manpower. They have also assisted with the Chicken Creek Restoration Project by securing over \$500,000 in funding. The Non-residential Outdoor School which the Friends Group pioneered has become a model for others around the state to replicate. I applaud the Friends Group for agreeing to go through a formal mentoring process that will

make the Group even better. In addition, two new high quality employees, Andrew and Tiffany, were hired.

There is a tendency to talk about the Friends Group as a single entity, which it is, but it is also a collection of individuals who bring amazing value to the Refuge. Your time and efforts are invaluable for the positive interactions you have with the public on a day-to-day basis. The bottom line is, we could do it without you, but it wouldn't be effective or efficient or appropriate. Thank you again for all you do and for challenging us to do our best as we work toward a common goal of making these Refuges the best they can be.

Larry Klimek, Project Leader  
Tualatin River National Wildlife Refuge Complex



## SPECIAL REPORT: Board Members

2019-20	2020-21	2021-22
Bonnie Anderson (1)	Gary Fawver (1)	Dawn Carovano (2)
Cheryl Hart (1)	Tom Hartz (1)	Michelle Miller (2)
Keith Mays (1)	Sharon Miller (1)	Willem Stoeller (2)
	Peter Paquet (1)	Mark Newell (1)
	Alan Christensen (1)	Michelle Scholz (1)
* () number of 3 year terms elected to served since bylaw change 2016		Scott Owen (1)
		Irene Vlach (1)



## SPECIAL REPORT:

### 6th Annual President's Volunteer Service Awards

The sixth Annual President's Volunteer Service Award presentation was held during the Volunteer Appreciation Dinner in August, to honor Friends members that have contributed a substantial amount of volunteer time. It was publicized that the Friends would be documenting all hours that our members contribute to the Refuge and to the Friends each year, and that we would begin to honor their service annually with this award. Friends of the Refuge are certified to record and submit volunteer service hours to qualify for the President's Volunteer Service Awards. If you would like to participate, please contact Bonnie Anderson at [Info@FriendsofTualatinRefuge.org](mailto:Info@FriendsofTualatinRefuge.org) or (503) 625-5944 x227 to find out about tracking your volunteer hours. The President's Volunteer Service Award recognizes United States Citizens and lawfully admitted permanent residents of the United States who have achieved the required number of hours of service over a 12-month period- or cumulative hours over the course of a lifetime. Award recipients are recognized with the official President's Volunteer Service Award pin, a personalized certificate of achievement and a congratulatory letter from the President of the United States.

These are the Friend's 2018 award recipients by level.

#### *Bronze Adults 100-249 hours Bronze Pin:*

Sara Abel, James Alexander, Barbara Allen, Barbara Birney, Mike Burnett, Wendy Cattnach, Alan Christensen, Marty Clancy, Christine Crocker, Darlene Dumke, David Dunn, Pam Farris, Larry Harrington, Carly Hirshmann, Don Holland, Linda Kilgore, Ginny Maffitt, Paula McCall, Sharon Miller, Scott Owen, Ruthann Panck, Rodney Robertson, Michelle Scholz, John Schweitzer, Judy Silverforb, Ed Squiers, and Mary Taylor

#### *Silver Adults 250-499 volunteer hours in 2018 Silver Pin:*

Alan Fitzpatrick, Bob Fuquay, Frank Nusser, Mike Skinner and Willem Stoeller

#### *Gold Adults 500+ volunteer hours in 2018 Gold Pin:*

George Burnett, Dawn Carovano, Cheryl Hart and Tom Hartz

*Thank you to all of our volunteers. Your ongoing support of the Friends and the Refuge is a huge part of what makes Tualatin River National Wildlife Refuge so special.*



#### Bronze Level

Kids: 50 to 74 hours  
Young Adults: 100 to 174 hours  
Adults: 100 to 249 hours

Family & Groups: 200 to 499 hours



#### Silver Level.

Kids: 75 to 99 hours  
Young Adults: 175 to 249 hours  
Adults: 250 to 499 hours

Family & Groups: 500 to 999 hours



#### Gold Level

Kids: 100 hours or more  
Young Adults: 250 hours or more  
Adults: 500 hours or more

Family & Groups: 1000 hours or more

## **SPECIAL REPORT:**

### **Tualatin River Photographic Society**

**Willem Stoeller, FOR Board Member**



The Friends Photo Society had a slow start this year, after a loss of leadership led to a few months without activity. I volunteered to represent the FOR Photo Society at board meetings. My goals for the FOR Photo Society are to bring back the monthly evening meetings with educational presentations and to get FOR photo Society members involved with volunteering for the Refuge.

Four evening meetings took place this year. Al Baker, with his son, regaled us with a wonderful slideshow of photos taken during a 6-week trip to Montana, Alberta, BC, Yukon Territory and Alaska. Barbara Birney presented photos and information about a photo workshop in Yellowstone National Park. Pat and Matt Blair shared their photos of a trip to the Galapagos Islands. For our September gathering I engaged Adam Bacher, a Portland-based professional

photographer, who presented his Conspiracy of Ravens project.

In November our guest speaker and presenter will be Patricia Davidson, a professional nature and landscape photographer based in Oregon. She spent over twenty years on the southern Oregon Coast developing her landscape photography skills on the beaches and in the forests of the Pacific Northwest. In 2015, she set off in an RV on an epic four-year journey to photograph the American West. She will entertain us with photos from her travels as a nomadic photographer visiting national and state parks.

In December our guest speaker and presenter will be Andrew Studer. Andrew is a professional commercial photographer and timelapse cinematographer based in Portland. With a huge passion for the outdoors, Andrew is constantly seeking out adventure and unique and engaging ways to capture what he sees. His work has been featured in National Geographic, CBS news, BBC and many others. Andrew will present a selection of his nature photos and as a bonus also regale us with his incredible "Faces of Bhutan."

As we move into FY2020, I am looking for volunteers to assist the refuge by creating a photo journal of the Chicken Creek project and other projects at the TRNWR Complex. I also need volunteers who are willing to lead a monthly photo walk together with one or more volunteer naturalists. These photo walks will offer the public a way to learn how to take good nature photographs and at the same time learn something about this refuge we all love.





## SPECIAL REPORT:

### Chicken Creek Restoration

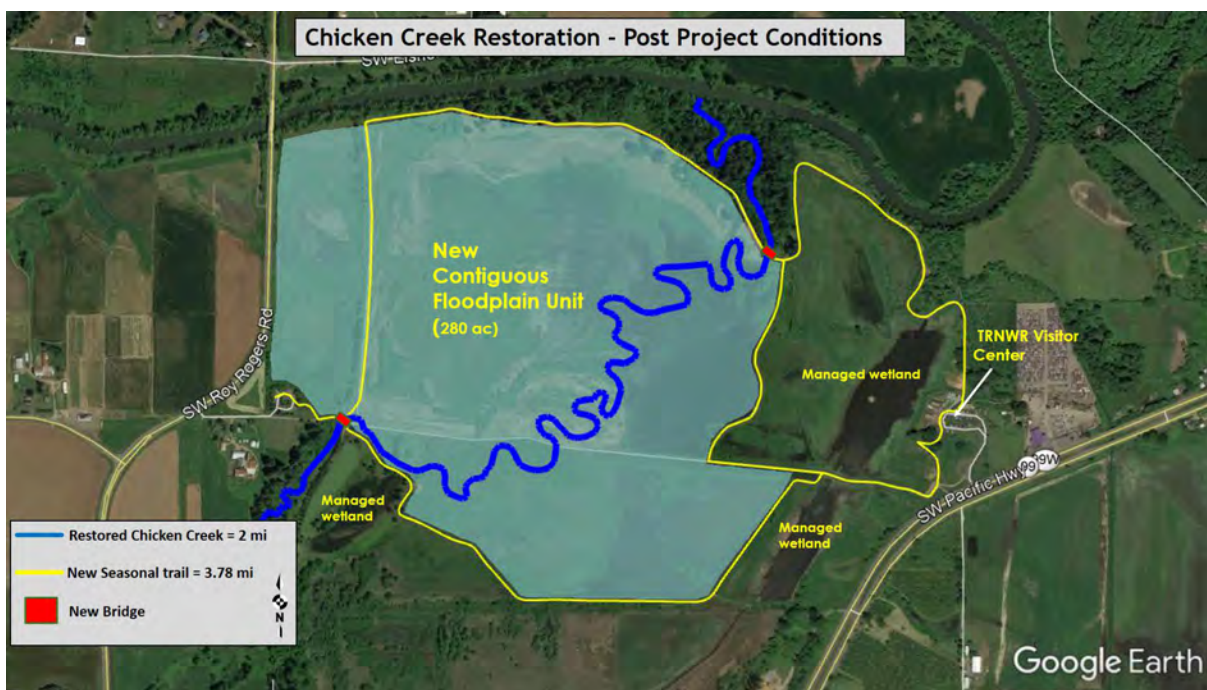
Bonnie Anderson, FOR Board Member

As construction begins on the Chicken Creek Restoration Project, it is important to note that the Friends of the Refuge are playing an important role in the work that is being accomplished. Earlier this year, the Friends were awarded two separate grants to help pay for portions of the overall restoration work.

In March, the Friends received a \$100,000 Tualatin River Enhancement Grant (TREE) from Tualatin Soil and Water Conservation District. This grant was awarded because the project will restore the lower reaches of Chicken Creek, a tributary of the Tualatin River, to a more historic alignment through the floodplain. It will also restore the associated floodplain wetlands. The project will include the installation of two bridges, the TREE grant is funding one of the bridges.

In May, the Friends were awarded a \$440,000 grant from Willamette Water Supply for the Chicken Creek Restoration Project over the next two years. The project partners the Friends of the Refuge and the U. S. Fish and

Wildlife with Ducks Unlimited and Clean Water Services. By realigning existing Chicken Creek to a more natural meander through the historic floodplain and eliminating the existing levee and other water management infrastructures, natural physical and biological processes will be restored to two miles of stream channel and 280 acres of floodplain. This will benefit a broad suite of aquatic and wetland-dependent flora and fauna, as well as substantially reduce sediment and nutrient input into the Tualatin River. The Willamette Water Supply grant will provide funding to cover the earthwork, channel realignment and log placement in the channel.







Puddle Stompers



Please be sure to “like” the Friends’ Facebook page in 2020! The page provides news about events and tidbits of interest about the Refuge. Share FOR posts with your friends to let them know about all the great things happening at the Refuge and in the National Wildlife Refuge System as a whole.